

CERTIFICATE OF LOCATION OF GOVERNMENT CORNER

East Quarter Corner of Section 3, Township 107, Range 39, 5TH P.M.

STATE OF MINNESOTA, County of MURRAY

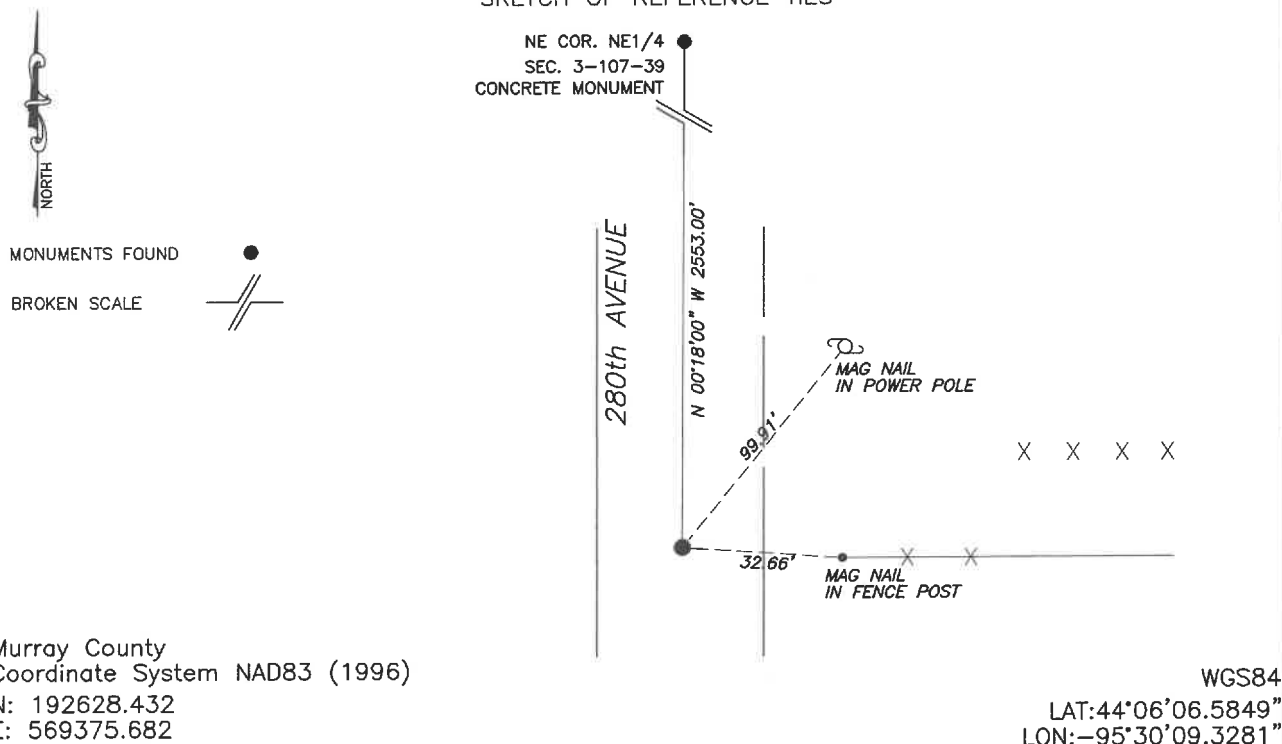
At the corner location shown on the sketch:

☒ On 6/4/2024 found a 1/2" iron with seal #12967
DATE

☒ left monument as found, ☐ lowered monument, ☐ removed monument (explain)

☐ On _____ placed a _____
DATE

SKETCH OF REFERENCE TIES



Statement of evidence relative to this corner location is on back of page.

I hereby certify that this document and the data contained herein was prepared by me or under my direct supervision.

Daniel L. Bueltel
Daniel L. Bueltel
License No. 43844

3/12/2025
DATE

MAR 13 2025

Karen Bram
MURRAY COUNTY RECORDER

Statement of Evidence

EAST QUARTER CORNER SECTION 3, T107N, R39W of the 5th P.M.

In July of 1861 J.W. Myers surveyed the original township lines.

In September of 1861 L. Brockmann subdivided the township.

A survey on June 22, 1913 by J.W. Woolstencroft notes a stone on the east side of the road grade for the corner.

On October 9, 1980, Gary Martin, L.S. #12967, found a large pointed field stone and placed a $\frac{1}{2}$ " iron with seal #12967 over top of the stone.

County records from May 24, 2016, notes an iron w/seal #12967 found at the corner.

On August 27, 2020, Jason Latzke with Westwood Professional Services found the $\frac{1}{2}$ " iron set by Gary Martin.

On June 4, 2024 Buelte-Moseng Land Surveying found a $\frac{1}{2}$ " iron with seal #12967 at the corner, probed beside the iron and hit the stone. Accepted the iron as the corner.